

# Pitch Mapping Chart

## Alto Flute

**Instructions:** Pitch mapping is a helpful technique to become aware of our personal intonation tendencies and those of our instrument. Mapping the entire pitch range of your flute will enable you to make quicker and more accurate intonation corrections. Working with a tuner, map every pitch by marking down its tendency in the corresponding line. In the low flutes family, alternate fingerings have a crucial role in aiding pitch accuracy. Become familiar with alternate fingerings available to individual pitches by drawing your options on this chart.

First octave	C	C#	D	D#/ Eb	E	F	F#/ Gb	G	G#/ Ab	A	A#/ Bb	B
Sharp												
In-tune												
Flat												
Alternate fingerings/ Comments												

Second octave	C	C#	D	D#/ Eb	E	F	F#/ Gb	G	G#/ Ab	A	A#/ Bb	B
Sharp												
In-tune												
Flat												
Alternate fingerings/ Comments												

# Pitch Mapping Chart

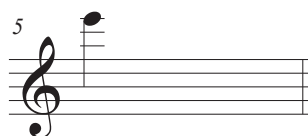
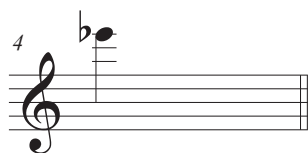
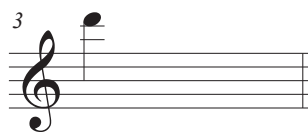
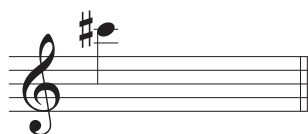
**Alto  
Flute**

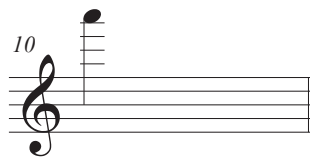
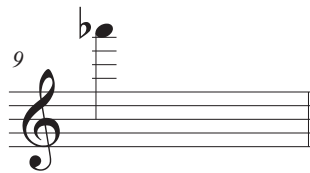
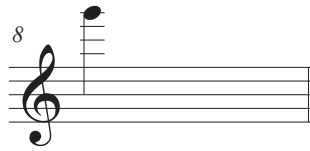
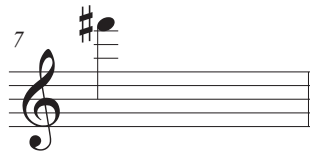
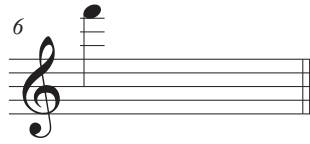
Third octave	C	C#	D	D#/ Eb	E	F	F#/ Gb	G	G#/ Ab	A	A#/ Bb	B
Sharp												
In-tune												
Flat												
Alternate fingerings/ Comments												

# Alternate Fingerings for the Alto Flute

## Third Octave

Find your own, most optimal fingerings for intonation. Then color in the keys you need to close.





# Alternate Fingerings for the Alto Flute

## Third Octave

Find your own, most optimal fingerings for intonation. Then, color in the keys you need to close.

